

How to Build a Beetle Bank

Step 1 Build

Create a ridge using two-directional plowing or bed shaper for a berm 2 - 6 feet wide. September or October is the best time to build your beetle bank.



Step 2 Plant



Drill or broadcast seeds over the mound at about 5 pounds per 1,000 square feet or plant grass plugs 18 inches apart. Use a mix of fescue, bent grass, and at least 30% bunch grasses.

Step 3 Maintain

Mow once or twice a year for the first few years, with spot spraying or pulling if weeds persist. Stop mowing once the plants are established. They will begin crowding out the weeds.



Jon Wagner 2016

What is a beetle bank?

A berm planted with bunch grasses to provide overwintering habitat for predatory ground beetles.

Why plant a beetle bank?

- Reduce pest pressure on crops
- Reduce need for insecticides
- Help suppress crop weeds by feeding on weed seeds



Beneficial beetles *and their prey*

Ground Beetles – *Insects, grasshoppers, aphids, flies, snails, slugs*

Rove Beetles – *Insect eggs and small larvae, slugs, mites*

Lady Beetles – *Aphids, scales, whiteflies, mites, thrips*

Soldier Beetles – *Insect eggs and larvae, aphids, snail, slugs*

Native Pacific Northwest grasses

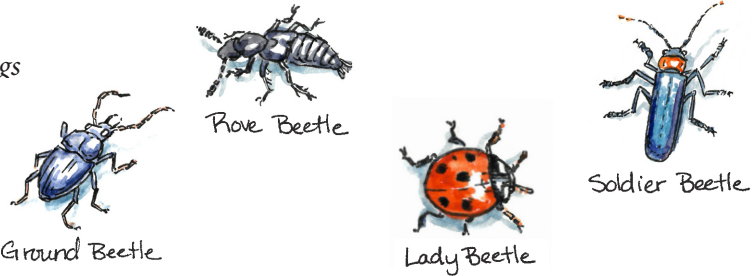
Blue Wild Rye (*Pseudoroegneria spicata*)

Roemer's Fescue (*Festuca roemeri*)

California Oatgrass (*Danthonia californica*)

Prairie Junegrass (*Koeleria macrantha*)

Slender Wheatgrass (*Elymus trachycaulus*)



Tualatin Soil and Water
Conservation District
swcd.net



East Multnomah Soil and Water
Conservation District
emswcd.org



CLACKAMAS SOIL AND WATER
CONSERVATION DISTRICT
conservationdistrict.org

Good dirt. Clean water.

Contact your local soil and water conservation district for assistance